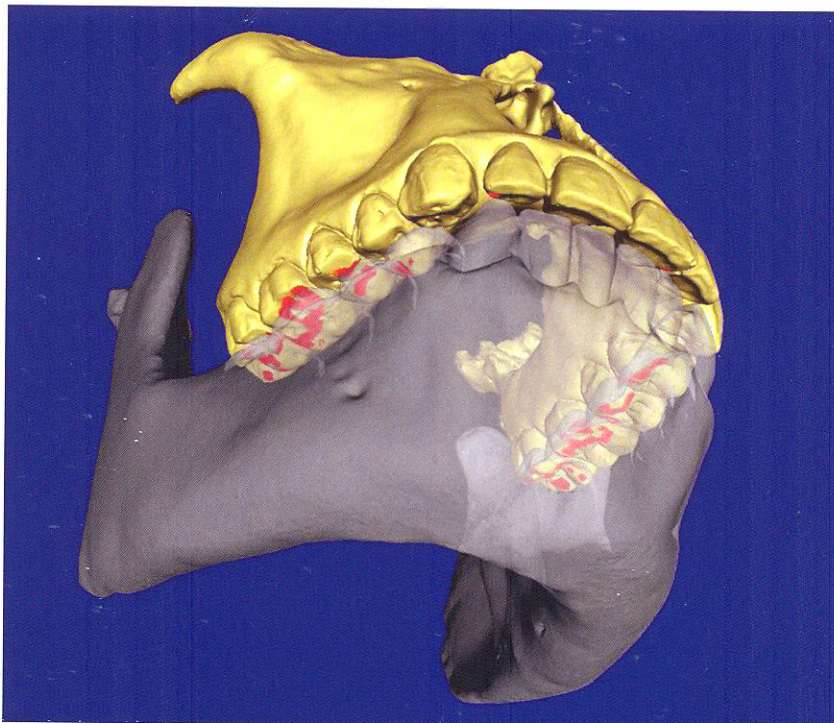


# 11<sup>th</sup> Meeting of the Society for Anthropology (GfA)

## Evolutionary and Modern Challenges to Homo sapiens – an anthropological inquiry



September 15-18, 2015, Munich, Germany

Abstract and Program Booklet



*Carl Friedrich von Siemens Stiftung*

STAATSSAMMLUNG FÜR  
ANTHROPOLOGIE UND  
**SAPM**  
PALÄOANATOMIE MUC



**DFG** Deutsche  
Forschungsgemeinschaft

staatliche  
naturwissenschaftliche  
sammlungen bayerns

# Program

## 11<sup>th</sup> Meeting of the Society of Anthropology (Germany)

15. –18. September 2015, Munich, Germany



*Carl Friedrich von Siemens Stiftung*

### Evolutionary and modern challenges to Homo sapiens - An anthropological inquiry

**Monday** at the Schloßwirtschaft Schwaige Nymphenburg there is a "casual get together" in the restaurant's garden-area (Biergarten) where you also have the chance to pre-register and pick up your conference package. The restaurant is next to the meeting venue.

<b>Tuesday</b>	<b>September 15, 2015</b>	
	Presenter	
9.00-9.30	George McGlynn	Opening words
9.30-10.15	Ottmar Kullmer	Invited Speaker: The lost bite: biological and cultural evolution of teeth
10.15-10.30	Katerina Harvati	Paleoanthropology in the Balkans: recent research
10.30-11.00	Coffee break	
11.00-11.15	Bettina Jungklaus	The Mesolithic burials of Gross Fredenwalde - the earliest cemetery in Germany?
11.15-11.30	Negahnaz Moghaddam	Diet in the Late Iron Age - stable isotope analyses of human remains from Switzerland
11.30-11.45	Jan Nováček	Burials from a marble sarcophagus from Roman Ephesus
11.45-12.30	Ian Tattersall	Invited Speaker: The evolution of modern human thought
12.30-14.00	Lunch break	ggf. Treffen der Arbeitsgruppen (work group meeting)

14.00-15.00	Panel presentation	Paleoepidemiology of Ancient Egypt: Bioarcheological study of mummies and skeletons from different archeological sites dating from 3500 BC to 800 AD.
	Albert Zink	Diseases and social status at the pre and early dynastic site of Abydos, Egypt
	Estelle Hower-Tilman	Anthropological-palaeopathological examination of skeletons from Buto, Egypt (3rd Intermediate Period, Late Period, and Roman-Ptolemaic time)
	Sandra Lösch	Anthropological investigations in Dra' Abu el-Naga and Deir el-Bachit (Thebes-West, Egypt)
	Albert Zink	Life and death in ancient Egypt: Comparative analysis of mummies and skeletons from Pre Dynastic to Coptic times
15.00-15.15	Amelie Alterauge	Identification of the crypt mummies from Sommersdorf Castle (Germany) - An interdisciplinary approach
15.15-15.30	Frank Rühli	Anthropological topics as part of the medical / Health Sciences curriculum in Switzerland and Australia: a qualitative and quantitative feedback
15.30-16.00	Coffee break	
16.00-16.45	Leslie Aiello	Invited Speaker: The expensive tissue hypothesis and the evolution of the genus Homo
16.45-17.00	Stefan Exner	Causal elements in ordinary language
17.00-17.15	Eugenia Ramirez-Goicoechea	Defining the place of social and cultural anthropology in human evolution
17.15-17.30	Nadja Hoke	Experimentally induced bacterial degradation of bone
17.30-17.45	Zsolt Bereczki	Roman medicine vs. cranial surgery of the Barbarians
18.00		Medieval Munich: Group tour of the Old City. Meet outside of venue at Carl-Friedrich-Siemens-Stiftung

<b>Wednesday</b>	<b>September 16, 2015</b>	
	Presenter	
9.00-10.30	Panel presentation	Urban Anthropology
	Ursula Wittwer-Backofen	Introduction - Urban Anthropology
	Virpi Lummaa	Invited Speaker: Maternal age and reproductive history in pre-industrial humans
	Margaret Judd	Invited Speaker: Life and the death course at the Byzantine monastic household at Mount Nebo
	Wulf Schiefenhövel	Ethological aspects in dense (urban) environments
10.30-11.00	Coffee break	

11.00-12.30	Panel presentation	(continued) Urban Anthropology
	Andreas Lehmann	An analysis of life history of a Swiss population in early industrial time
	Katrin Kromeyer-Hauschild	Urban-rural differences in child growth
	Michael Hermanussen	The impact of road network on body height
	Rebekka Mumm	It's a matter of tempo - The influence of the individual developmental tempo on growth references
	Sylvia Kirchengast	Migrants in the city - health problems among immigrant women in Vienna
	Ursula Wittwer-Backofen	Mother and child health in urban environments
	Christiane Scheffler	Influence of industrial based endocrine disrupting chemicals (EDC) on fat distribution pattern of child and adolescents
12.30-14.00	Lunch break	
14.00-14.15	Nancy Anne Konvalinka	Duty and Choice. An ethnography of elder care and child care in politics and kinship in Spain
14.15-14.30	Andreas Rott	Early Medieval multiple burials - families united in death?
14.30-14.45	Abigail Bouwman	You can tell a lot from a smile: How ancient biomolecules from teeth at medieval Dalheim cemetery inform our past
14.45-15.30	Christina Papageorgopoulou	Invited Speaker: Population genetics of the Mesolithic-Neolithic transition and Early Bronze Age Period in Greece
15.30-16.00	Coffee break	
16.00-16.15	Manuela Dittmar	Association of undersleeping and oversleeping with the cortisol awakening response - a cross sectional population-based study in Danish twins (the GEMINAKAR cohort)
16.15-16.30	Zoltán Pintér	Comparative analysis of three different methods for estimating deep abdominal fat tissue
16.30-16.45	Katharina Krippner	Amino acid analysis of hair keratin in forensic cases of malnutrition
16.45-17.30	Niels Lynnerup	Invited Speaker: Post-mortem CT and forensic anthropology
ab 18.00		GfA Mitgliederversammlung

<b>Thursday</b>	<b>September 17, 2015</b>	
	Presenter	
9.00-10.30	Panel presentation	Kunst, Gewalt, Macht, Angst (Art, Violence, Power, Fear)
	Gerhard Apfelauer	Music - Power - Force in a History Context

	Johanna Forster	Architecture of power - Ethological aspects of semiotic performance
	Christian Lehmann	Violent music - a paradox?
	Christa Sütterlin	Art as a ritual behavior?
	Wulf Schiefenhövel	Violence and its Representation in Verbal Art among the Eipo, Mek Culture and Language Group, Highlands of Papua Province, Indonesia (West-New Guinea)
10.30-11.00	Coffee break	
11.00-11.45	Katja Mellmann	Invited Speaker: On the evolutionary relation between fear and literature
11.45-12.00	Stefan Flohr	Using cervical canine measurements for sex determination. A comparison of an Early Neolithic and an early medieval assemblage
12.00-12.15	Erika Molnar	The current state of tumor research in the bioarcheological material of Hungary
12.15-12.30	Bernd Trautmann	An unusual case of funerary practice from the medieval church of Grevenmacher (Luxembourg)
12.30-14.00	Lunch break	ggf. Treffen der Arbeitsgruppen
14.00-14.15	Orsolaya László	"From Chaos to coherence": Anthropological analysis of commingled human remains from Tomb Saff-1 at El Khoha Hill in Qurna
14.15-14.30	Marlene Mahn	Structure analysis of tooth cementum with the cSAXS Beam
14.30-14.45	Andrea Göhring	Approximation of the sea spray effect and a limnic influence on $\delta^{34}\text{S}$ and $\delta^{15}\text{N}$ values of terrestrial animals, freshwater animals and humans
14.45-15.00	Martin Häusler	A prone burial of a 30-year-old man from the early 17th Century of Zürich, Switzerland, with rheumatoid arthritis
15.00-15.30	Panel presentation	Lernen in direktiven und non-direktiven Prozessen. Evolutionäre und pädagogische Aspekte. (Directive and non-directive processes of learning. Evolutionary and pedagogical aspects)
	Sylvia Kirchengast	Sex and gender differences during subadult lifespan - current problems from the viewpoint of evolutionary history
	Markus Binder	Do computers reorganize our thinking? Observations from a classroom point of view
15.30-16.00	Coffee break	
16.00-18.00	Panel presentation	(continued) Lernen in direktiven und non-direktiven Prozessen. Evolutionäre und pädagogische Aspekte. (Directive and non-directive processes of learning. Evolutionary and pedagogical aspects)
	Adolf Heschel	Invited Speaker: Learning: from elaboration to imitation or why "pure" imitation does not exist

	Annette Schneider	Do children and adults learn in the same way?
	Manfred Wimmer	Directive versus non-directive learning processes from an evolutionary point of view
	Sonja Windhager	Invited speaker: Snap judgments from male and female faces: insights from geometric morphometrics
19.00	Conference Dinner	Königlicher Hirschgarten

<b>Friday</b>	<b>September 18, 2015</b>	
	Presenter	
9.00-10.30	Panel presentation	Across the Alps in prehistory. Innovative methods for migration research by stable isotope analysis of cremated skeletal finds
	Gisela Grupe	Introduction
	Simon Trixl	Cultural change and animal import - a zooarchaeological perspective
	Balazs Kocsis	Mineralogy of bone material. Alterations in archaeological and contemporary bone material from ageing and burning
	Anita Toncala	Isotopic ,mapping of the Alps and it's foothills based on archaeological animal bone finds. The research potential of stable lead, strontium and oxygen isotopes
	Markus Mauder and Erini Ntoutsis	Data driven isotope mapping based on multiple sample types
	Dominika Wycisk	Transalpine mobility assessed by multi-isotope fingerprints of cremated skeletal remains
	Gisela Grupe	Concluding remarks
10.30-11.00	Coffee break	
11.00-11.45	Mario Slaus	Invited Speaker: The impact of low intensity, endemic warfare on the health of medieval populations in Croatia
11.45-12.00	László Paja	Osseous signs of interpersonal violence. Analysis of southern Slavic graves dated back to early modern times (site Perkáta- Nyúli-dúlő, Transdanubia, Hungary)
12.00-12.15	Daniel Schütz	Pathogen richness covers world-wide neutral genetic pattern of ABO locus
12.15-12.30	Felix Engel	An infrastructure for digital standardisation in physical anthropology
12.30-12.45	Student presentation awards and closing words	

Podium

## **The Impact of Low Intensity Endemic Warfare on the Health of Medieval Populations in Croatia**

Mario Šlaus

Anthropological Centre, Croatian Academy of Sciences and Arts, Zagreb, Croatia

Warfare has afflicted humankind throughout its long history, and is a phenomenon that, unfortunately, still fundamentally affects the modern world. Recent history has seen several fundamental changes in the nature of war the most important of which is a shift from external to internal or domestic wars, a type of war characterized by low-intensity, endemic warfare that the international community is still struggling to develop the strategies and mechanisms to deal with effectively.

Analyzing the effects that war had on health through the deep time perspective that archaeological and anthropological investigations afford provides unique data on the interactions between warfare, health and the environment, and thus offers conclusions that are particularly relevant to disadvantaged communities throughout the developing world where most wars are currently being fought. To this end an international and multidisciplinary team of collaborators has assembled to conduct bioarchaeological investigations on two large composite skeletal samples from Croatia. The two series represent individuals who inhabited Croatia throughout: a) the period from 1100-1400 AD; a period of prosperity and peace prior to the arrival of Ottoman Turks, and b) the period between 1400-1700 AD during which time the Ottoman Empire annexed large parts of Croatia as it expanded into East and Central Europe. Preliminary results indicate a significant increase in interpersonal violence, particularly violence aimed against women as reconstructed through significantly elevated frequencies of perimortem trauma, as well as an increase in the frequencies of non-specific infectious diseases and metabolic diseases.



Gesellschaft für Anthropologie e.V.

---

## Certification of Participation

It is hereby certified, that

**Mr. / Mrs. Mario Slaus**

has attended the 11. GfA conference:

**Evolutionary and Modern Challenges to Homo sapiens –  
An Anthropological Inquiry**

held in Munich, Germany, 15<sup>th</sup> – 18<sup>th</sup> September 2015.

Dr. George McGlynn

**Gesellschaft für Anthropologie e.V.**

Vorsitzender: Dr. George McGlynn

Staatssammlung für Anthropologie und Paläoanatomie München

Karolinenplatz 2a

D-80333 München

Telefon: 49 89 5488438 12

E-Mail: [gc.mcglynn@extern.lrz-muenchen.de](mailto:gc.mcglynn@extern.lrz-muenchen.de)