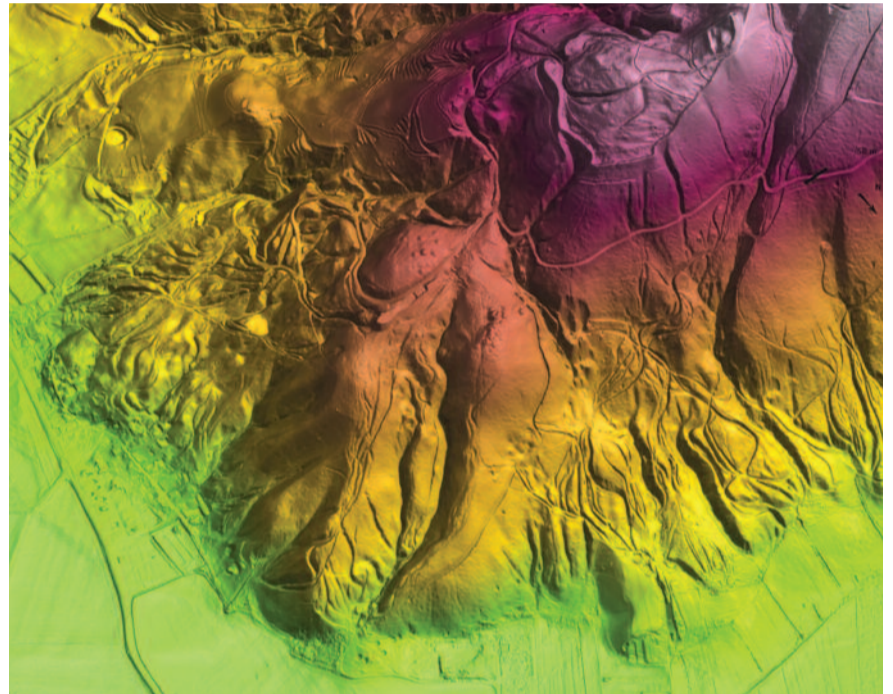


# Encounters and Transformations in Iron Age Europe (ENTRANS)



*The Iron Age in Europe was a period of tremendous dynamism, during which the cultural constructs of urbanised Mediterranean civilisations clashed with alternative webs of identity in ‘barbarian’ Europe. Until recently Iron Age cultural identities were viewed as essentially monolithic (Romans, Illyrians, Celts etc). Working in the East Alpine region, ENTRANS explores the role of material culture, bodily treatments and patterns of landscape inhabitation in the construction and negotiation of more fluid and complex Iron Age identities. Through analysis of art-works, osteological and isotopic analysis, remote sensing, and traditional archaeological excavation, ENTRANS will develop new integrative methodologies for the study of past cultural encounters.*